





ABOUT US

Evergreen Signage & Contractor W.L.L. established in the state of Qatar, since 2010. With the aim of providing quality service in the field of signage advertising & contracting works, Evergreen is dedicated to offer its clients the best value for their brand identity by taking a comprehensive approach to their needs. Our commitment is to extend worldclass service, high quality results, and Innovation. We reach to build a complete and comprehensive business solution to help them manage their corporate identity. Our clients come to us when they need to build a reputation, win more customers, and increase sales. Our professional team of experienced marketers, designers, writers and developers together with expert resources help them to successfully reach their target and build successful businesses. Our company is committed to provide state of the advertising system. Our goal is to achieve the best for customer who will be using branded signage and advertising. Our product & Service are of high Quality and Made under International standards.

Our Mission

The Mission of Ever Green Signage & Contracting W.L.L. is to build up our reputation that of integrity.

Excellence, experience and leadership and this by

Continuously improving the quality of our work and services.

Striving to be always up to our client's expectation.

Delivery and installation in the shortest period.

We give special emphasize on our periodical maintenance.

Safety, functionality uncompromising quality have always been key.

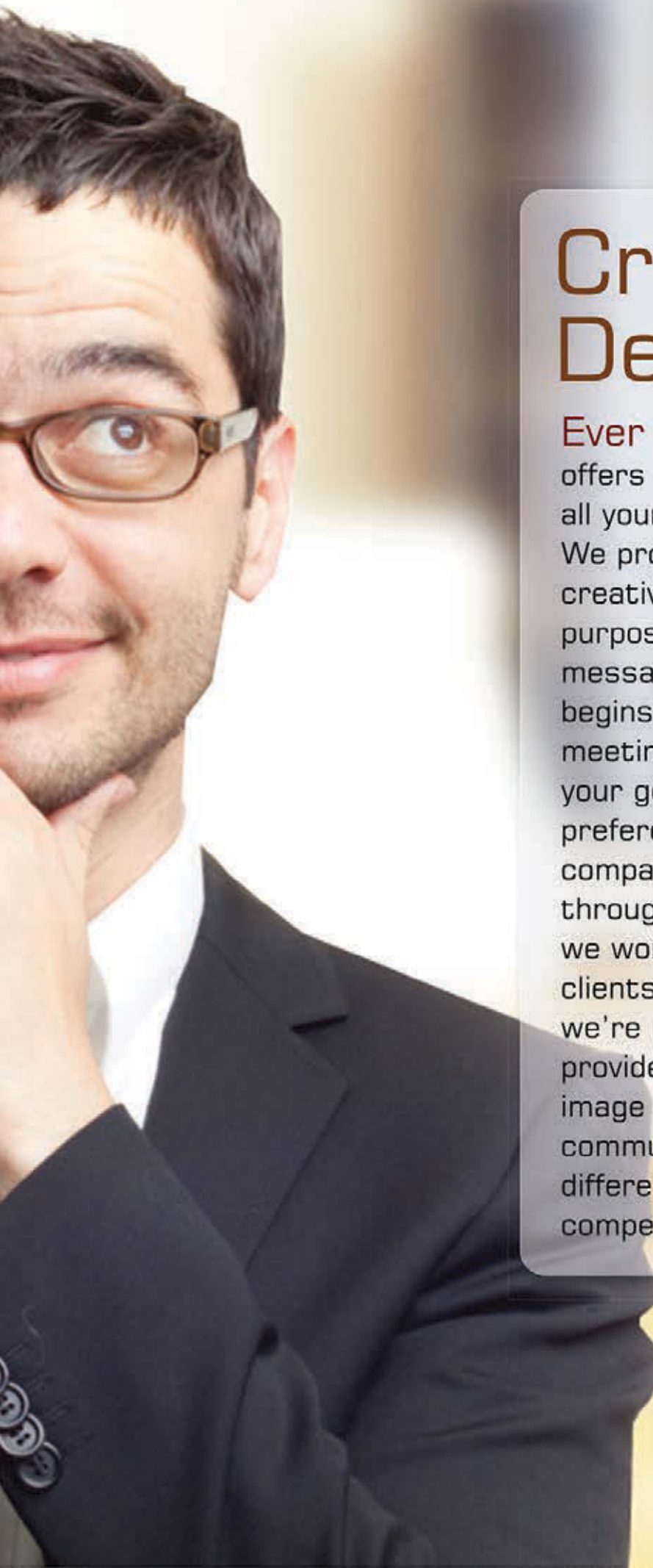
Elements of our company philosophy.



Time Management

At Ever Green Advertising we strive hard to make the best use of our time and believe that firm time management can optimize our efforts in examining a client's objectives from many perspectives.

Time
Management



Creative Design

Ever Green Advertising offers immediate solutions for all your creative design needs. We provide our clients with creative designs that has purpose and a clear visual message. Our design process begins with content input meetings to help us identify your goals, your personal preferences and your company's brand promise throughout our design process we work very closely with our clients to make sure that we're meeting their goals. We provide them with the right image and message that communicates who they are differentiating them from their competitors.

OUR SERVICES

1 All kind of Signages & Advertising.

2 Architectural Signages.

3 Decorative Metal Works.

4 Steel Fabrications.

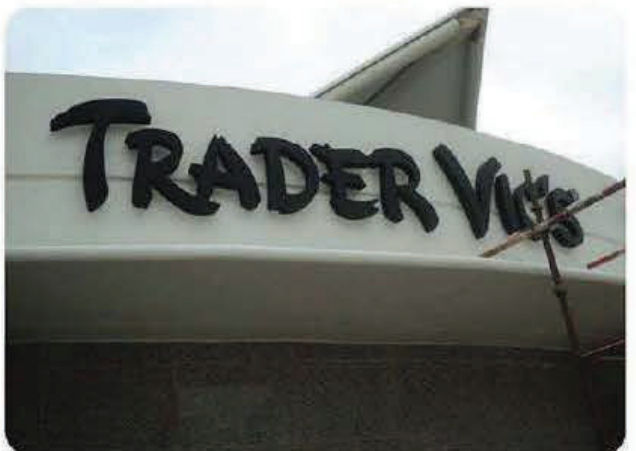
5 Stainless Steel Fabrications.

6 Handrail Steel & Stainless Steel.



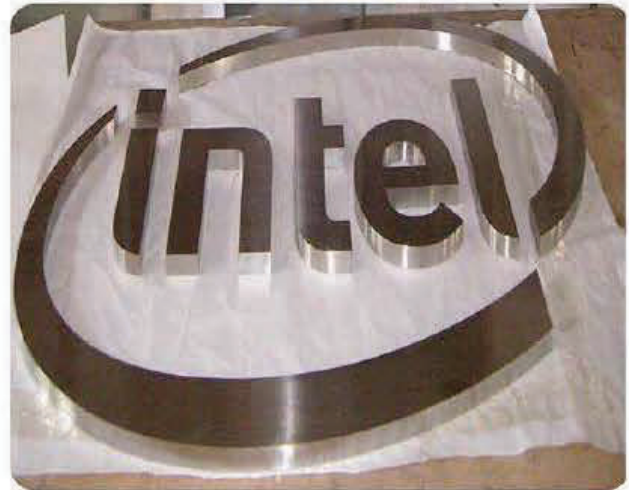
AN ISO 9001-2015 CERTIFIED COMPANY

3D LED Signage Letters with Backlit / Frontlit - Indoor & Outdoor



www.signageqatar.com

Stainless Steel Signage



www.signageqatar.com



Internal Signage



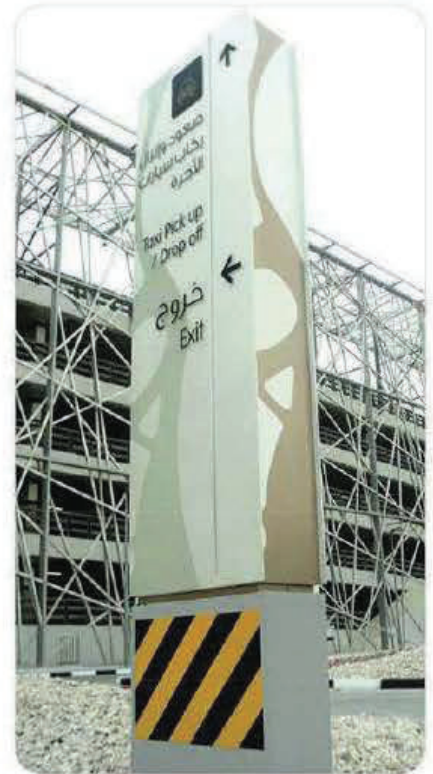
Project Board



Fencing



Pylon Signage



Traffic Signage



Popup, Rollup, Standees



www.signageqatar.com



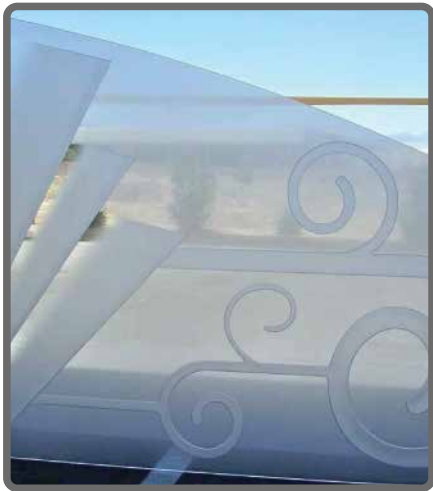
Steel
Fabrication



AN ISO 9001:2008 CERTIFIED COMPANY

www.signageqatar.com

GLASS AND HANDRAIL WORKS





Steel
Fabrication



www.signageqatar.com



AN ISO 9001:2008 CERTIFIED COMPANY

Display Standee



MASHRABEYA PANELS



MASHRABEYA PANELS



Recently Completed Projects

www.signageqatar.com



AN ISO 9001-2015 CERTIFIED COMPANY

WYNDHAM DOHA WEST BAY



www.signageqatar.com



AN ISO 9001-2008 CERTIFIED COMPANY

STAINLESS STEEL SIGNAGES



ILLUMINATED STAINLESS STEEL SIGNAGES



Recently Completed Projects

Sak Holding 5 Star Hotel



Ezdan Mall , Wakra



www.signageqatar.com



Recently Completed Projects

Ezdan Mall Wakra Branding



Aster Hospital External Signage

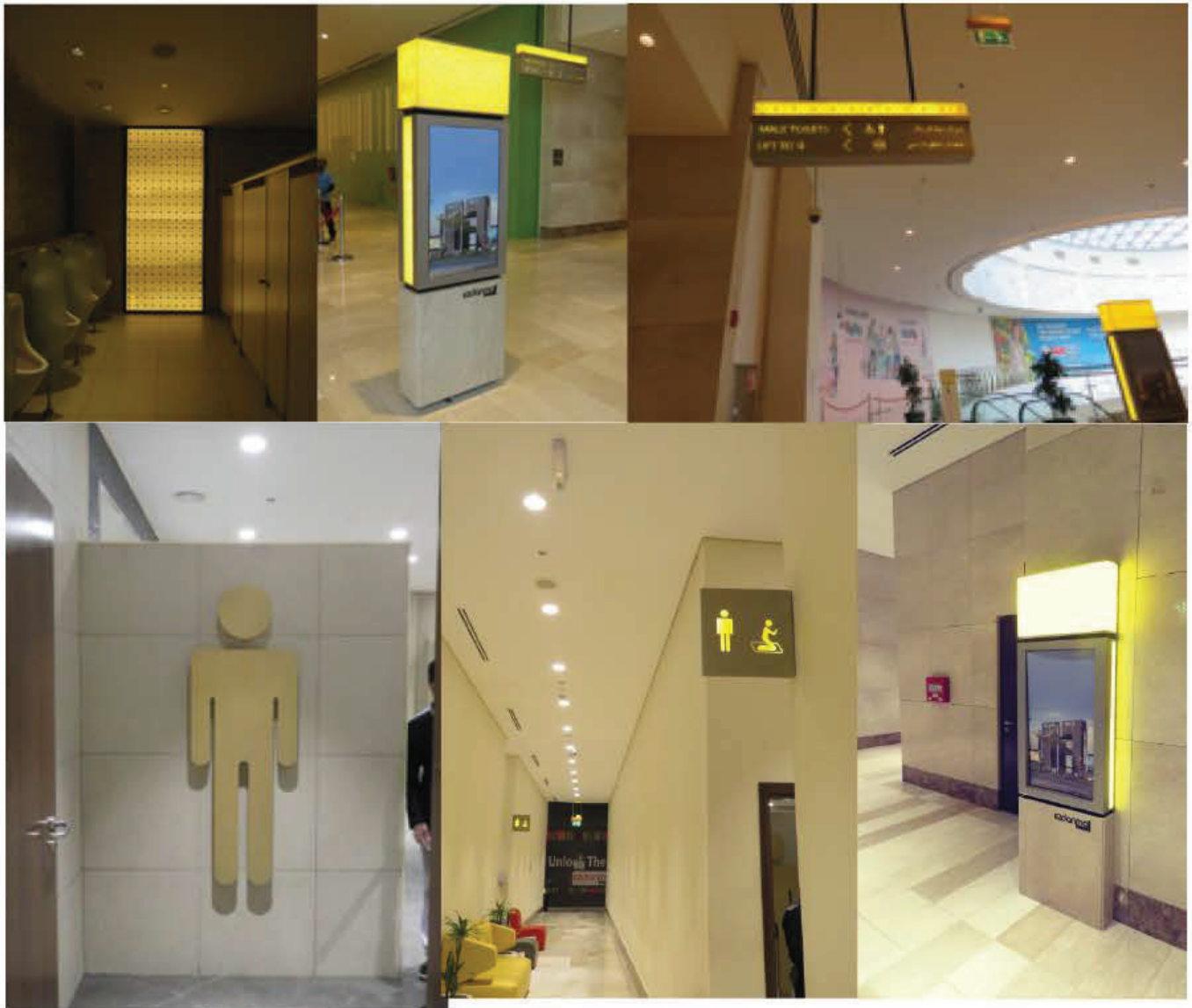


www.signageqatar.com



Recently Completed Projects

Ezdan Mall Wakra



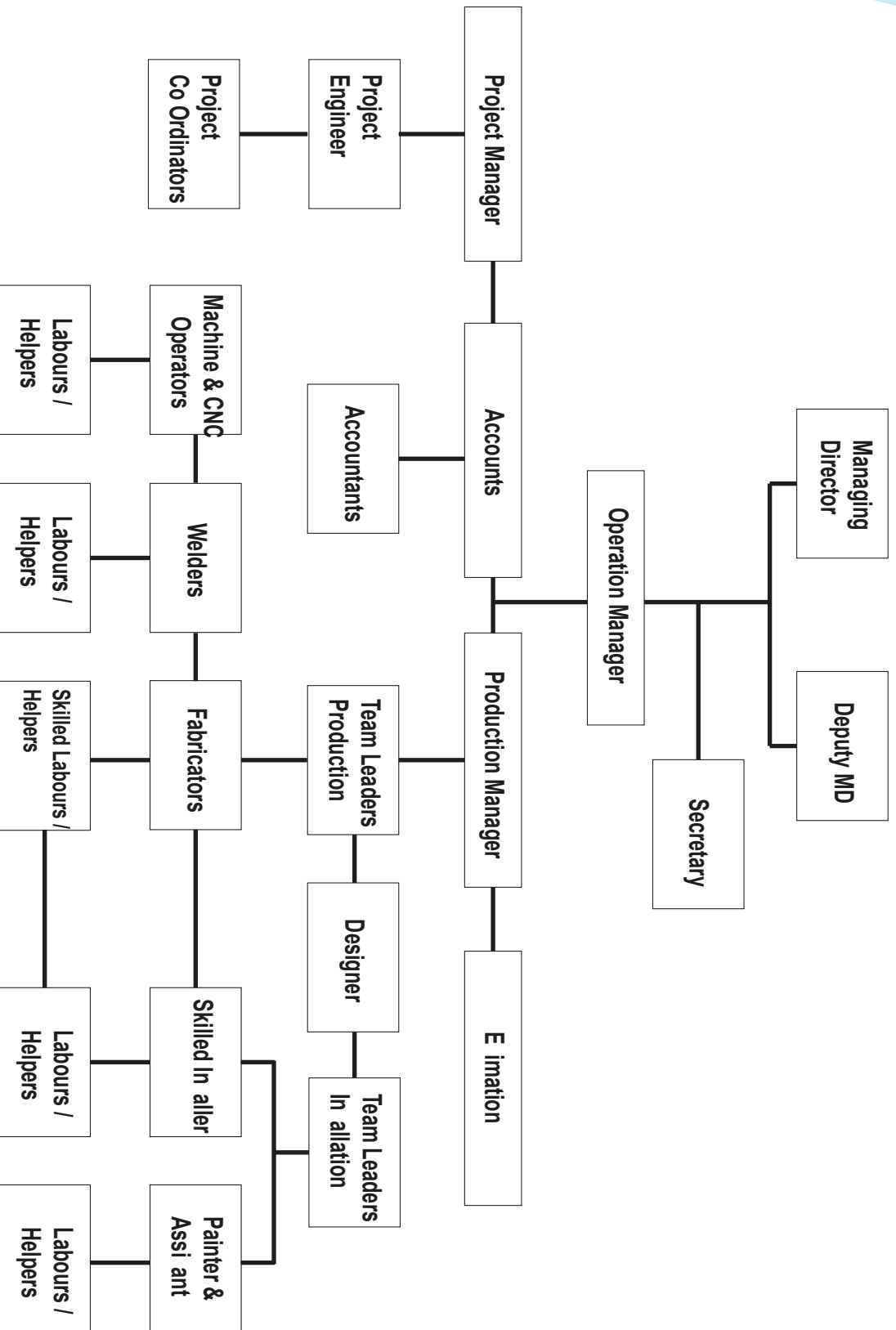
WOQOD
MAZROUAH



WOQOD MAZROUAH



Organization Chart



QUALITY POLICY

Our Company's strict policy is to use the best of the existing, new & innovative materials in sign manufacturing which helps us to maintain highest standards of productivity, quality, safety & to the ultimate satisfaction our customers.

At Evergreen Signage it is our policy to not only meet International Standards in Sign manufacturing, but also to exceed them.

In order to give our clients maximum value on their purchase, we aim to do the following:

- Provide our technicians and production team with regular training on the use of advanced tools in order to make use of their time more effectively.
- Research and development on both existing and new products in order to create a niche in the industry enabling us to offer our clients new solutions before our competitors.
- Training programs for our sales and marketing staff in order for them to master the skills of clients servicing and project management.

The management of Evergreen Signage ensures that the quality policy is implemented and adhered to at all time.

The management of Evergreen Signage is committed to provide the resources for the effective implementations of QUALITY SYSTEM and ensure that our quality policy is communicated and understood throughout organization.


AMAL.K.



General Statement of Policy, Duties & Responsibilities

1.1 Policy Statement

The Evergreen recognises and accepts its health and safety duties for providing a safe and healthy working environment (as far as is reasonably practicable) for all its workers under the Health and Safety at Work Act 1974, the Fire Precautions (Workplace) Regulations 1997, the Management of Health and Safety at Work Regulations 1999, other relevant legislation and common law duties of care.

Throughout this Statement, terms such as "staff", "workers", "employees", include paid and volunteer workers.

It is the policy of the Evergreen to promote the health and safety of the committee members, volunteers, staff and of all visitors to the Evergreen premises ("the Premises") and to that intent to:

- Take all reasonably practicable steps to safeguard the health, safety and welfare of all personnel on the premises;
- Provide adequate working conditions with proper facilities to safeguard the health and safety of personnel and to ensure that any work which is undertaken produces no unnecessary risk to health or safety;
- Encourage persons on the premises to co-operate with the Organisation in all safety matter, in the identification of hazards which may exist and in the reporting of any condition which may appear dangerous or unsatisfactory;
- Ensure the provision and maintenance of plant, equipment and systems of work that are safe;
- Maintain safe arrangements for the use, handling, storage and transport of articles and substances;
- Provide sufficient information, instruction, training and supervision to enable everyone to avoid hazards and contribute to their own safety and health;
- Provide specific information, instruction, training and
- Set up emergency procedures; Provide adequate First Aid facilities;
- Make sure that the workplace satisfies health, safety and welfare requirements, eg for ventilation, temperature, lighting and for sanitary, washing and rest facilities;
- Make sure that work equipment is suitable for its intended use as far as health and safety is concerned, and that it is properly maintained and used;
- Prevent or adequately control exposure to substances that may damage health;
- Take precautions against danger from flammable or explosive hazards, electrical equipment, noise or radiation;
- Avoid hazardous manual handling operations and, where they cannot be avoided, reduce the risk of injury;
- Provide health surveillance as appropriate;
- Provide free any protective clothing or equipment, where risks are not adequately controlled by other means;
- Ensure that appropriate safety signs are provided and maintained;
- Report certain injuries, diseases and dangerous

supervision to personnel who have particular health and safety responsibilities;

- Make, as reasonably practicable, safe arrangements for protection against any risk to health and safety of the general public or other persons that may arise from the Groups/Organisation's activities;

1.2 Statutory Duty of the Evergreen

The Evergreen will comply with its duty to ensure, as far as is reasonably practicable, the health, safety and welfare at work of its workers and of visitors to its premises and, in general, to:

- Make workplaces safe and without risks to health;
- Ensure plant and machinery are safe and that safe systems of work are set and followed;
- Ensure articles and substances are moved, stored and used safely;
- Give volunteers/ workers the information, instruction, training and supervision necessary for their health and safety.

In particular, the Evergreen will:

- Assess the risks to health and safety of its volunteers/workers;
- Make arrangements for implementing the health and safety measures identified as necessary by this assessment;
- Record the significant findings of the risk assessment and the arrangements for health and safety measures;
- Draw up a health and safety policy statement; including the health and safety organisation and arrangements in force, and bring it to the attention of its workers;
- Appoint someone competent to assist with health and safety responsibilities; occurrences to the appropriate health and safety enforcing authority.

1.3 Statutory Duty of the Evergreen Workers

Employees also have legal duties, and the Organisation confidently requests non-employed (voluntary) workers also to observe these. They include the following:

- To take reasonable care for their own health and safety, and that of other persons who may be affected by what they do or do not do;
- To co-operate with the Evergreen on health and safety;
- To use work items provided by the Evergreen correctly, including personal protective equipment, in accordance with training or instructions;
- Not to interfere with or misuse anything provided for health, safety and welfare purposes;
- To report at the earliest opportunity injuries, accidents or dangerous occurrences at work, including those involving the public and participants in activities organised by the Evergreen;
- Health and Safety law applies not only to employees in the workplace, it also applies to **organisations and people who stays in the Company Accommodation** to which members of the public have access.

ISO 9001:2015



Registration Certificate

This is to certify that
The Quality Management Systems
of

Evergreen Signage & Contracting W.L.L.

Carried out at following site:

**Office No. 205, Floor No. 2, Building No. 363,
Street No. 990, Zone 52, Doha, Qatar**

for their

QUALITY MANAGEMENT SYSTEM ISO 9001:2015

Scope of Activities covered by this Registration:

**Trading & Manufacturing of Signages, Architectural Metal
Works, General Contracting & Trading Services**

CERTIFICATE NO. : IAS/QMS/E1702

ISSUED ON : 20/11/2020

1ST SURVEILLANCE DUE ON: 20/10/2021

VALIDITY DATE : 19/11/2023

2ND SURVEILLANCE DUE ON: 20/10/2022

.....
THE VALIDITY OF CERTIFICATE IS SUBJECT TO REGULAR SURVEILLANCE AUDIT ON OR BEFORE ABOVE MENTIONED DATES AND IT'S ONLY VALID AFTER SUCCESSFUL SURVEILLANCE WITH CONTINUATION LETTER ISSUED BY CCPL

TO VERIFY THE STATUS OF THE CERTIFICATE, PLEASE VISIT IAFSEARCH CERT WEBSITE <https://www.iafcertsearch.org/>

AUTHORISED BY
CHAIRMAN / DIRECTOR
CARE CERTIFICATION PRIVATE LIMITED

THIS IS SINGLE-SITE CERTIFICATION
WWW.CARECERTIFICATION.COM

ADDRESS : - KEMP HOUSE, 160 CITY ROAD,
LONDON, EC1V2NX, UNITED KINGDOM

THE CERTIFICATE REMAINS THE PROPERTY OF CCPL AS PER CERTIFICATION AUDIT CONTRACT



Submittals & Approvals

www.signageqatar.com



AN ISO 9001-2015 CERTIFIED COMPANY

LIST OF MACHINERIES :

CNC ROUTER - JINAN PRO



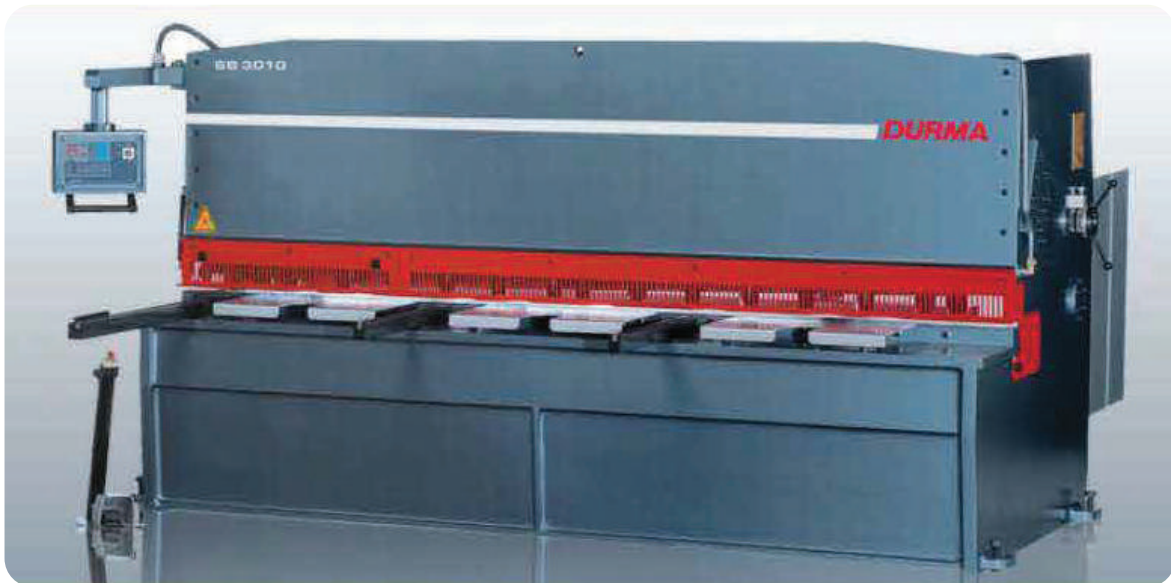
CNC LASER - JINAN PRO



BENDING MACHINE



SHEARING MACHINE



BOSCH WOOD
CUTTING MACHINE



BOSCH ALUMINIUM
CUTTING MACHINE



BENCH DRILLING MACHINE



ETCHING MACHINE



ARC WELDING MACHINE



MUTOH PRINTJET - DIGITAL PRINTER



VINYL LAMINATING MACHINE





+974 33147416
+974 44807434
+974 30884242
+974 44807450
+974 77001466

P.Box : 200529, Doha - Qatar
evergreen@signageqatar.com
marketing@signageqatar.com
www.signageqatar.com